



Door2Dreams, Inc.

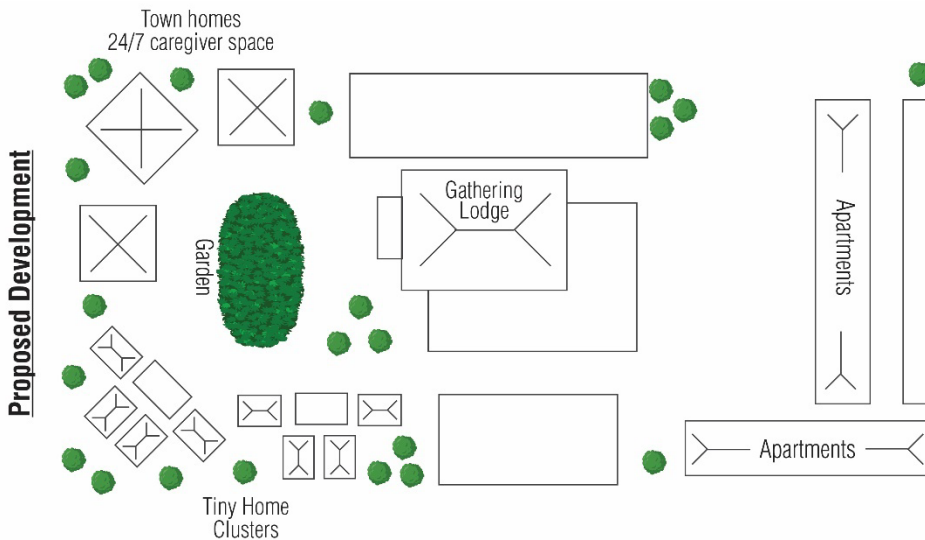
Creating IDD Housing in Stevens Point, Wisconsin

Introduction

Door2Dreams, Inc. (D2D) is a Wisconsin non-profit corporation of parents, professionals, and self-advocates helping adults with intellectual and developmental disabilities (IDD) live, work, and thrive where they choose to live. Our initial focus is to expand housing options and build community engagement through local partnerships.

Housing

Stevens Point, like the rest of the country has a significant shortage of appropriate housing for IDD adults. In Wisconsin, 60% of IDD individuals live with a family caregiver because they are unable to find appropriate housing. As many as 26% of those caregivers are 60 years of age or older. Once a caregiver experiences a medical event that prevents them from providing care, the IDD adult will face an emergency placement in which few or no housing options exist. There are more than 1,800 adults with cognitive disabilities living in Portage County. And the need becomes greater every year as another class graduates from SPASH high school. D2D's first major project is to build a client centered independent housing community in Stevens Point to ensure all IDD residents can find safe and supportive housing that meets their needs. Similar models are springing up across the nation to help address the significant lack of appropriate IDD housing options.



Community Engagement

Stevens Point is well suited to be a model for the nation as a supportive, inclusive community with many organizations with similar, aligned goals. Door2Dreams plans to combine housing with community support partnerships. Please donate your time, your connections, or your resources to the Door2Dreams fund via the Community Foundation of Central Wisconsin at <https://cfcwi.org> or visit our website at <https://door2dreams.org> to learn more about our organization.

Rachel Atkinson-Leach, *President*
Cell: (715) 252-7473

Karen Medo, *Vice-President*
Cell: (715) 570-8849

EMAIL: INFO@DOOR2DREAMS.ORG

DOOR2DREAMS.ORG

